



# NEEL

LIFTERS AND LOGISTICS

(A Unit of NEEL STEEL)



Most Preferred  
Hiring Services for  
Aerial Works







ULTRA BOOM

In today's competitive world, sky is the limit and to give a boost to massive manmade building creations such as pre – engineering structures, industrial /refineries plants and various other construction site, Neel lifters and logistics unleash Aerial work platforms performance by providing right equipment to increase productivity.

We are Ahmedabad based company offering Boom lifts, Scissors lifts and Telehandlers on rental basis throughout India. Our operators are highly trained and have hands on experience on our equipment.



An Absolute Excellence  
in Customer Service  
(24 X 7) !





# NEEL LIFTERS AND LOGISTICS

**Aim :**

Safety is our prime motto.

**Values :**

Quality, Diversity and Integrity is what we believe in.

**Strengths :**

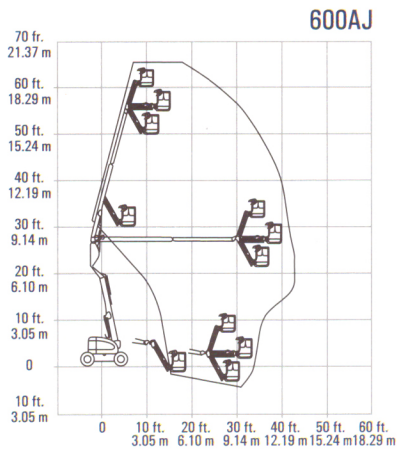
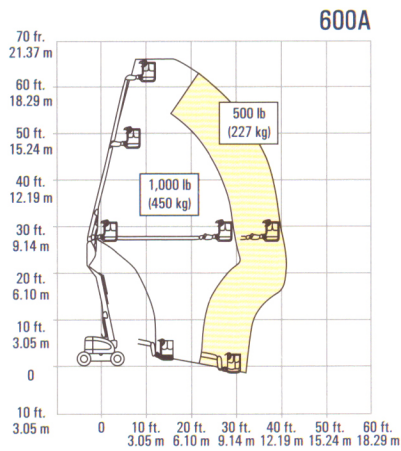
Offering exceptional service and quality to our customers defines our success. Whether it is transporting our equipments throughout India, servicing or any breakdowns/emergencies, our team is always ready to serve.



# 600 SERIES

## ARTICULATING BOOM LIFTS

### SPECIFICATIONS



#### REACH

Platform Height	
600A	60 ft 5 in. (18.42 m)
600AJ	60 ft 7 in. (18.47 m)
Horizontal Outreach	
600A	39 ft 7 in. (12.07 m)
600AJ	39 ft 9 in. (12.10 m)
Up and Over Clearance	26 ft 7 in. (8.1 m)
Swing	360 Degrees Continuous
Platform Capacity - Restricted	
600A	1,000 lb (450 kg)
600AJ	500 lb (227 kg)
Platform Capacity - Unrestricted	
600A	500 lb (227 kg)
Platform Rotator	180 Degrees Hydraulic
Jib (Range of Articulation)	
600AJ	130 Degrees (+70,-60)

#### DIMENSIONS

A. Platform Size	36 x 96 in. (0.91 x 2.44 m)
B. Overall Width	8 ft. (2.44 m)
Narrow Models	7 ft. (2.13 m)
C. Tailswing (Working Condition)	Zero
Narrow Models	5 in. (13 cm)
D. Stowed Height	8 ft. 4 in. (2.54 m)
E. Stowed Length	
600A	26 ft.5 in. (8.05 m)
600AJ	28 ft. 11.5 in. (8.83 m)
F. Wheelbase	8 ft. (2.44 m)
G. Ground Clearance	8 in. (20 cm)
Weight	
600A	22,150 lb (10,047 kg)
600A Narrow	24,100 lb (10,931 kg)
600AJ	23,050 lb (10,455 kg)
600AJ Narrow	24,200 lb (10,977 kg)
Max. Ground Bearing Pressure	
600A	77 psi (5.5 kg/cm <sup>2</sup> )
600A Narrow	94 psi (6.6 kg/cm <sup>2</sup> )
600AJ	75 psi (5.27 kg/cm <sup>2</sup> )
600AJ Narrow	94 psi (6.6 kg/cm <sup>2</sup> )

### ADVANTAGES

#### MORE VERSATILITY

- 7 ft (2.13m) wide narrow chassis models.
- Articulating jib provides wider range of motion.
- Standard oscillating axle and optional 4-wheel drive deliver Outstanding drive performance.

#### EXTRA REACH AND HIGH CAPACITY

- The industry's best reach envelope – 26 ft 7 in. (8.1 m) up and over height and up to 39 ft 9 in. (12.12m) horizontal outreach.
- Up to 1,000 lb (454 kg) platform capacity.





# 601 SERIES

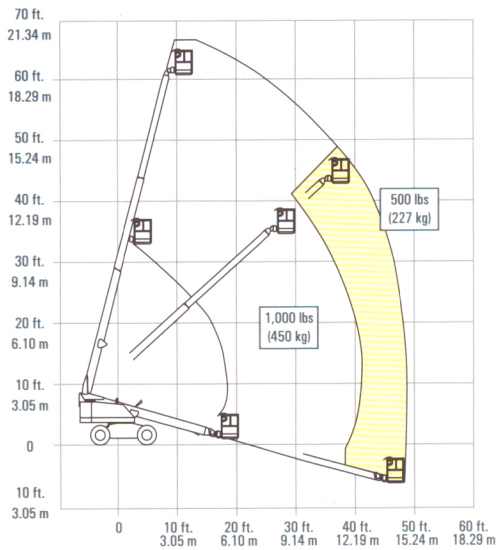
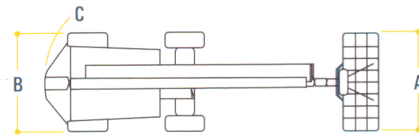
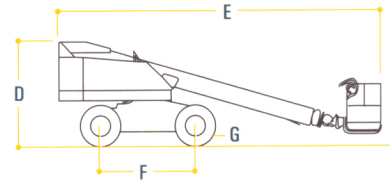
TELESCOPIC BOOMLIFTS

## REACH SPECIFICATIONS

Platform Height	60 ft. (18.29 m)
Horizontal Outreach	49 ft. (14.93 m)
Swing	360 Degrees Continuous
Platform Capacity - Restricted	1000 lbs. (450 kg)
Platform Capacity - Unrestricted	500 lbs. (227 kg)
Platform Rotator	160 Degrees Hydraulic

## DIMENSION DATA

A. Platform Size	30 in. x 72 in. (0.76 m x 1.83 m)
B. Overall Width	8 ft. (2.44 m)
C. Tailswing	3 ft. 9 in. (1.14 m)
D. Stowed Height	8 ft. 4 in. (2.54 m)
E. Stowed Length	27 ft. 5 in. (8.36 m)
F. Wheelbase	8 ft. 1 in. (2.46 m)
G. Ground Clearance	11 in. (28 cm)
Gross Vehicle Weight	21,500 lbs. (9,752 kg)
Max. Ground Bearing Pressure	64 psi (4.5 kg/cm <sup>2</sup> )



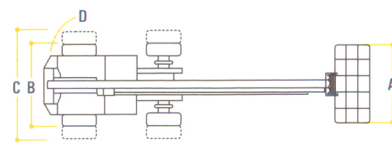
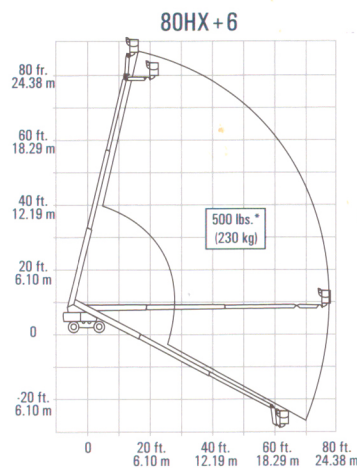
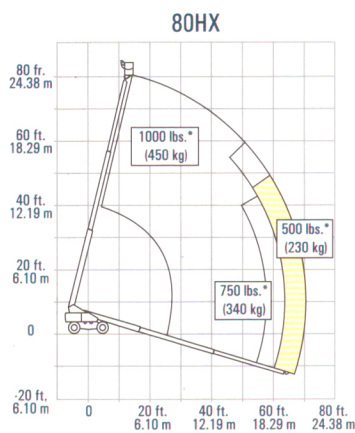
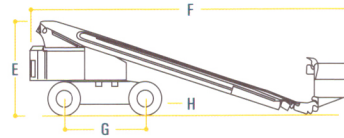


# 80HX SERIES

## TELESCOPIC BOOMLIFTS

### 80HX BOOM LIFT ADVANTAGES

- Optional oscillating axle provides a smoother ride and better traction for improved rough terrain drive performance.
- Extendible axles help reduce stowed width for ease of transport.
- Plate steel boom provides longer service life, minimal deflection.
- Proportional controls for smoother drive, lift and swing functions.
- Platform features a powered rotator for flexible positioning.
- JLG's Patented Extend-A-Reach 6 ft. (1.83 m) articulating boom section (80HX+6) provides "up & over" or "out & down" access.



### REACH SPECIFICATIONS

Platform Height (80HX)	80 ft. (24.38 m)
(80HX+6)	86 ft. (26.21 m)
Horizontal Outreach (80HX)	70 ft. 7 in. (21.51 m)
(80HX+6)	76 ft. 11 in. (23.44 m)
Below Ground Reach (80HX+6)	21 ft. 8 in. (6.6 m)
Swing	360° Continuous
Platform Capacity - Restricted (80HX)	1000/750 lbs. (450/340 kg)
Platform Capacity - Unrestricted (80HX)	500 lbs. (230 kg)
Platform Capacity (80HX+6)	500 lbs. (230 kg)
Platform Rotator	180° Hydraulic
Jib (Range of Articulation) (80HX+6)	6 ft. (1.83 m) 95° (+15,-80)

### DIMENSION DATA

A. Platform Size (80HX)	36 x 96 in. (0.91 x 2.44 m)
(80HX+6)	36 x 72 (0.91 x 1.83 m)
B. Overall Width ( Axles Retracted)	8 ft. 2 in. (2.49 m)
C. Overall Width ( Axles Extended)	10 ft. (3.05 m)
D. Tailswing	2 ft. 11 in. (89 cm)
E. Stowed Height	9 ft. 7 in. (2.92 m)
F. Stowed Length (80HX)	33 ft. 7 in. (10.24m)
(80HX+6)	36 ft. 9 in. (11.2 m)
G. Wheelbase	10 ft. (3.05 m)
H. Ground Clearance	10 in. (25 cm)
Gross Vehicle Weight* (80HX)	31,800 lbs. (14,428 kg)
(80HX+6)	36,900 lbs. (16,742 kg)
Max. Ground Bearing Pressure (80HX)	103 psi (7.2 kg/cm <sup>2</sup> )
(80HX+6)	118 psi (8.3 kg/cm <sup>2</sup> )





# 120HX

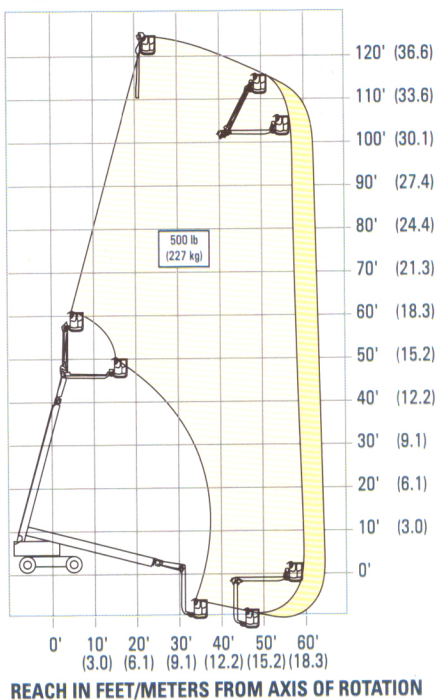
## TELESCOPIC BOOMLIFTS

### ADVANTAGES

- JLG's high performance telescopic boomlift provides with extendable axle, patented extend-a-reach, 4-wheel drive and crab steer all as standard equipment.
- Low maintenance, moisture resistant electric/hydraulic proportional controls provide smooth operation for drive, lift and swing.
- Designed for a wide variety of demanding maintenance, construction and high reach access applications.

MACHINE SPECIFICATIONS			
PLATFORM HEIGHT	120 ft. 0 in. 36.6 m	MAIN PUMP OUTPUT Piston	34 gpm @ 2500 rpm 128 L/min
WORKING HEIGHT	126 ft. 0 in. 38.4 m	Gear	12 gpm @ 2500 rpm 45 L/min
PLATFORM DIMENSIONS	36" x 72" x 44" 91 m x 1.83 m x 1.12 m	AUXILIARY PUMP OUTPUT	4.75 gpm 18 L/min
PLATFORM CAPACITY	500 lbs. 227 kg	HYDRAULIC TANK CAPACITY	50 U.S. gals 189 L
STOWED LENGTH Working	52 ft. 4 in. 15.9 m	FUEL TANK CAPACITY	26 U.S. gals 98 L
Transport	35 ft. 11 in. 10.9 m	TRAVEL SPEED	2.75 mph 4.43 km/hr
STOWED HEIGHT	10 ft. 4 in. 3.15 m	GRADEABILITY	40% 22
WIDTH Axles Retracted	8 ft. 6 in. 2.59 m	OUTSIDE TURNING RADIUS	18 ft. 9.75 in. 5.73 m
Axles Extended	10 ft. 10 in. 3.30 m	HORIZONTAL REACH	60 ft. 0 ft. 18.3 m
TAILSWING	34 in. 86 m	TIRES (Foam Filled)	445/65 R-22.5
GROSS WEIGHT (approx)	(1) 43,500 lbs. (1) 19,750 kg	WHEELBASE	11 ft. 4.5 in. 3.47 m
ENGINE Diesel	76 HP @2500 rpm	GROUND CLEARANCE	12 in 33 cm

### 120HX REACH DIAGRAM





# 150HAX

## ARTICULATING BOOM LIFTS

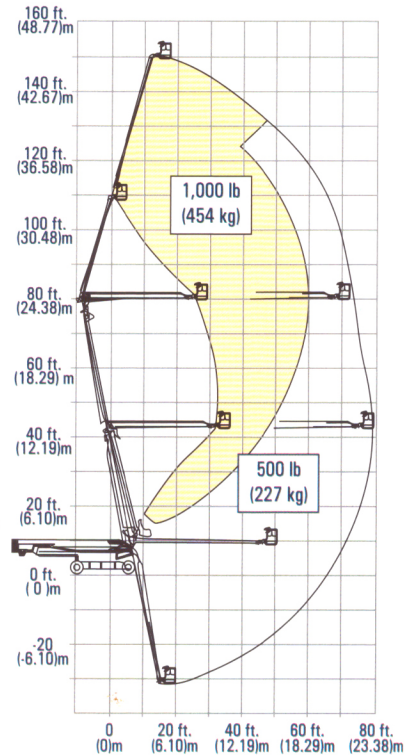
### SPECIFICATIONS

#### REACH

Platform Height	150 ft. (45.72 m)
Horizontal Outreach	79 ft. 3 in. (24.16 m)
Up and Over Height	79 ft. 11 in. (24.36 m)
Below Ground Reach	30 ft. 4 in. (9.25 m)
Swing	360° Continuous
Platform Capacity - Restricted	1,000 lb (454 kg)
Platform Capacity - Unrestricted	500 lb (227 kg)
Platform Rotator	165° Hydraulic Jib
(Range of Articulation)	6 ft. (1.83 m)
	132 degrees (+71,-61)

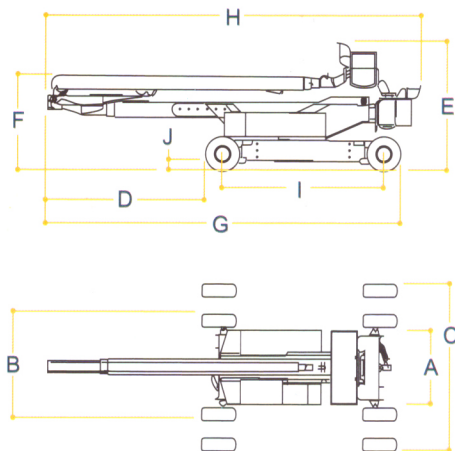
#### DIMENSIONS

A. Platform Size	36 x 96 in. (0.91 x 2.44 m)
B. Overall Width - Axles Retracted	11 ft. 6 in. (3.51 m)
C. Overall Width - Axles Extended	18 ft. (5.49 m)
D. Tailswing (Stowed)	17 ft 7 in. (5.36 m)
Tailswing (Fully Elevated)	Zero
E. Stowed Height	14 ft. (4.27 m)
F. Stowed Height (Platform Tilted)	10 ft. 6 in. (3.2 m)
G. Stowed Length	39 ft. 5 in. (12.01 m)
H. Stowed Length (Platform Tilted)	41 ft. 7 in. (12.67 m)
I. Wheelbase	18 ft. (5.49 m)
J. Ground Clearance	11 in. (28 cm)
Weight*	58,100 lb (26,354 kg)
Max. Ground Bearing Pressure**	120 psi (8.4 kg/cm <sup>2</sup> )



### ADVANTAGES

- World's Largest self-propelled articulating boom lift
- Longest outreach - 79 ft. 3 in. (24.16 m)
- Highest platform height - 150 ft. (45.72 m)
- Extendable axles





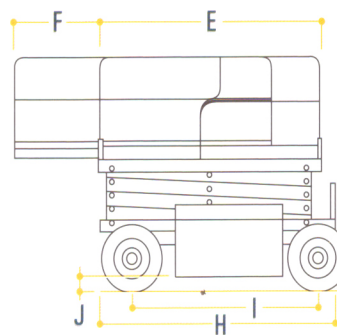
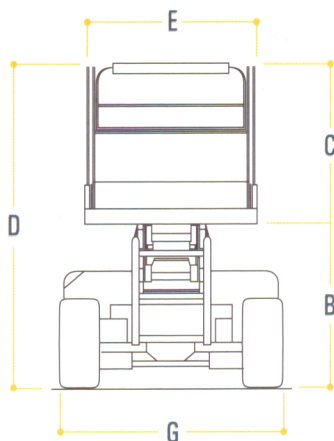
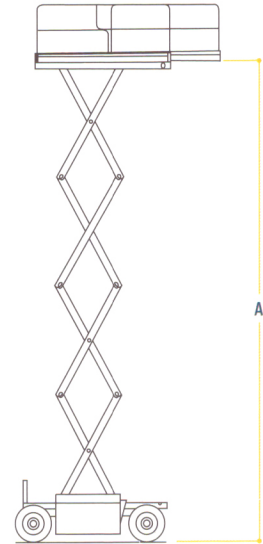
# SCISSORS LIFT

ENGINE POWERED AERIAL WORK PLATFORM

## SPECIFICATIONS

	260MRT	4394RT
<b>ROUGH TERRAIN SCISSOR LIFT</b>		
Platform Height	26 ft. (7.92 m)	43 ft (13.11 m)
Platform Capacity	1,250 lb (567 kg)	1,500 lb (680 kg)
Capacity on Extension	300 lb (136 kg)	500 lb (227 kg)
Capacity w/Dual Extension	N/A	1,250 lb (567 kg)
Platform Size	65 x 102 in. (1.65 x 2.59 m)	86 x 150 in. (2.18 x 3.81 m)
Overall Width	5 ft. 9 in. (1.75 m)	7 ft. 9 in. (2.36 m)
Weight	7,360 lb (3,338 kg)	15,300 lb (6,940 kg)
Dual Fuel Engine-Kubota	24.5 hp (18.3 kW)	-
GM Vortec 3000 MPFI	-	82 hp (61.1 kW)
Diesel Engine-Kubota	23.5 hp (17.5 kW)	-
Deutz D2011L03	-	49 hp (36.4 kW)

<b>AVAILABLE OPTIONS</b>		
3000 Watt, 110V-AC Power Pack Generator	•	○
3500 Watt, 110V-AC Generator	○	•
33.5 lb (15.19 kg) Propane Tank	•	○
43.5 lb (19.73 kg) Propane Tank	○	•
Flashing Amber Beacon	•	•
Leveling Jacks	•	•
Platform Worklights	•	•
Self-Closing Entry Gate	•	•
1/2 in. Air Line to Platform	•	•
Dual 48 in. Manual or Powered Deck Extensions	○	•
Cold Weather Start Kit (Deutz)-Includes battery heater and hydraulic tank heater. Glow plugs standard on Deutz engine.	○	•
Cold Weather Start Kit (GM) -Includes battery heater, hydraulic tank heater and block heater.	○	•





# RT SERIES

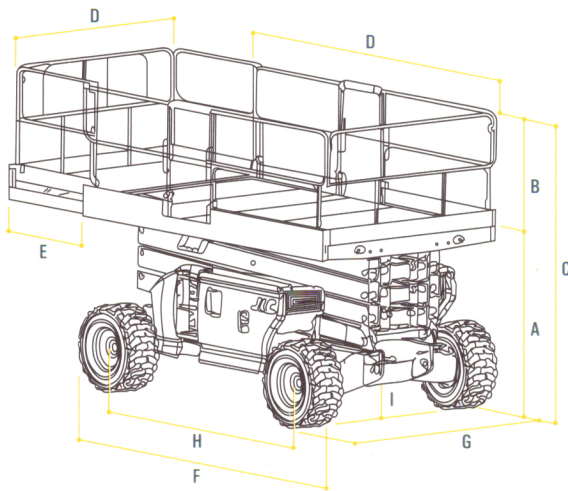
ROUGH TERRAIN SCISSOR LIFTS

## ADVANTAGES OF 260 MRT

- Narrow 69 in. chassis fits into tight spaces.
- Standard 4-wheel drive with 35% gradeability.
- Larger deck spaces and 1,250 lb capacity.
- Stronger arm stack for improved scissor rigidity
- Ease of service with built-in diagnosis.

## ADVANTAGES OF 4394RT

- Holds up to 1,500 lb on the Model 4394RT.
- Faster set up with exclusive one-touch leveling jacks option.
- 4-wheel drive and hydrostatic transmission deliver unmatched terrainability.
- Wide platforms get closer to your work area
- Durable, non-skid aluminum deck.





# TELESCOPIC BOOM LIFT

ULTRA SERIES

## SPECIFICATIONS

1200SJP	
<b>REACH SPECIFICATIONS</b>	
Platform Height	120 ft. (36.58 m)
Horizontal Reach	75 ft. (22.86 m)
Up and Over Height	-
Swing	360° Continuous
Platform Capacity - Restricted	1,000 lb (454 kg)
Platform Capacity - Unrestricted	500 lb (227 kg)
Platform Rotator	180°
JibPLUS	Length 8 ft. (2.44 m)
	Horizontal Motion <sup>1</sup> 180°
	Vertical Motion 130° (+75/-55)

DIMENSION DATA	
A. Platform Size	36 x 96 in. (0.91 x 2.44 m)
B. Overall Width	Axles Retracted 8 ft. 2 in. (2.49 m)
	Overall Width Axles Extended 12 ft 6 in. (3.81 m)
C. Tailswing	5 ft. 6 in. (1.67 m)
D. Stowed Height	10 ft. (3.05 m)
	Stowed Length 34 ft. 11 in. (10.64 m)
E. Wheel Base	12 ft. 6 in. (3.81 m)
F. Ground Clearance	Axle 12 in. (30 cm)
	Chassis 25.5 in ( 65 cm )
Weight <sup>2</sup>	40,900 lb ( 18, 552 kg )

### ADVANTAGES

- ▶ Ground to 120 ft. up in 95 seconds.
- ▶ With a Dual 1,000 / 500 lbs capacity the platform can handle more workers, tools or materials.
- ▶ Envelope tracking system regulates speeds at work
- ▶ Envelope edges to enhance your comfort.

